

EnrSave ES-101 - QUICK INSTALLATION GUIDE

The exclamation point within an equilateral triangle is intended to alert the user to the presence of important operating and maintenance (servicing) instructions in the literature accompanying the appliance.

WARNING: Caution: To prevent the risk of electric shock do not remove cover (or back). No user-serviceable parts inside. Refer servicing to qualified service personnel.

The lightning flash with arrowhead symbol, within an equilateral triangle, is intended to alert the user to the presence of uninsulated "dangerous voltage" within the product's enclosure that may be of sufficient magnitude to constitute a risk of electric shock to persons.

WARNING: TO REDUCE THE RISK OF FIRE OR ELECTRIC SHOCK, DO NOT EXPOSE THIS APPARATUS TO RAIN OR MOISTURE.

CAUTION: TO REDUCE THE RISK OF ELECTRIC SHOCK, DO NOT REMOVE COVER (OR BACK). NO USER-SERVICEABLE PARTS INSIDE. REFER SERVICING TO QUALIFIED SERVICE PERSONNEL.

Safety Instructions

1. Read these instructions.
2. Keep these instructions.
3. Heed all warnings.
4. Follow all instructions.
5. Do not use this apparatus near water.
6. Clean only with dry cloth.
7. Do not install near any heat sources such as radiators, heat registers, stoves, or other apparatus (including amplifiers) that produce heat.
8. Protect the power cord from being walked on.
9. Only use attachments specified by the manufacturer.
10. Unplug this apparatus during lightning storms or when unused for long periods of time.
11. Refer all servicing to qualified service personnel. Servicing is required when the apparatus has been damaged in any way, such as power-supply cord or plug is damaged, liquid has been spilled or objects have fallen into the apparatus, the apparatus has been exposed to rain or moisture, does not operate normally, or has been dropped.

12. Damage Requiring Service
Unplug the apparatus from the wall outlet and refer servicing to qualified service personnel under the following conditions:
A. When the power-supply cord or plug is damaged.
B. If liquid has been spilled, or objects have fallen into the apparatus.
C. If the apparatus has been exposed to rain or water.
D. If the apparatus has been dropped or damaged in any way.
E. When the apparatus exhibits a distinct change in performance this indicates a need for service.

13. Object and Liquid Entry
Never push objects of any kind into the apparatus through openings as they may touch dangerous voltage points or short-out parts that could result in a fire or electric shock. The apparatus shall not be exposed to dripping or splashing and no objects filled with liquids, such as vases shall be placed on the apparatus.

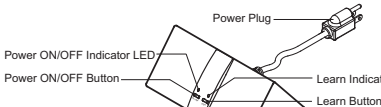
14. Batteries
Always consider the environmental issues and follow local regulations when disposing of batteries.

Precautions

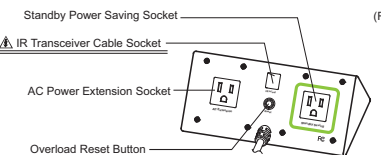
1. Care
Occasionally you should dust the apparatus all over with a soft cloth. For stubborn stains, use a soft cloth dampened with a weak solution of mild detergent and water. Dry the apparatus immediately afterwards with a clean cloth. Don't use abrasive cloths, thinners, alcohol, or other chemical solvents, because they may damage the finish or remove the panel lettering.
2. Power
WARNING
BEFORE PLUGGING IN THE UNIT FOR THE FIRST TIME, READ THE FOLLOWING SECTION CAREFULLY.
AC outlet voltages vary from country to country. Make sure that the voltage in your area meets the voltage requirements printed on the product (AC 100-125V/AC 220-240V/50/60HZ).
3. Never Touch This Unit with Wet Hands
Never handle this unit or its power cord while your hands are wet or damp. If water or any other liquid gets inside this unit, have it checked by your local dealer.
4. Installing This Unit
Install this unit in a well-ventilated location. Do not expose this unit to direct sunlight or heat sources. Install this unit horizontally. Never use it on its side or on a sloping surface, because it may cause a malfunction.

ES101 Functions Instruction

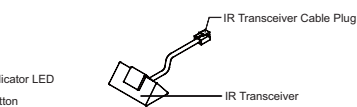
ES101 Front Panel



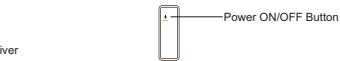
ES101 Back Panel



Accessory 1: IR Transceiver



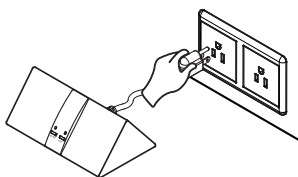
Accessory 2: Remote Control



1 Using ES101 with its Own Supplied Remote Control. For Quick Use.

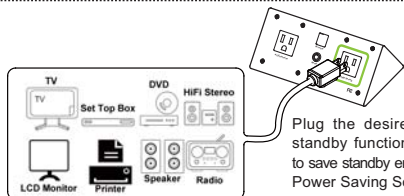
The instruction below is for using ES101 with the supplied Remote Control.

1-1



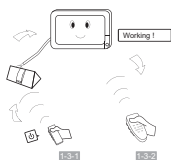
Plug ES101 Power Plug into the power mains.

1-2



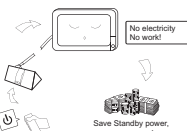
Plug the desired electronic product (with standby function, ex. TV) that you would like to save standby energy into the green Standby Power Saving Socket of ES101.

1-3



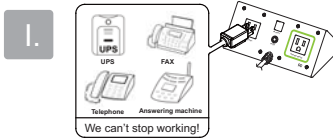
Turn on ES101 by pressing ON on the supplied Remote Control to enable the attached electronic product with power [1-3-1]. You may then operate the electronic products as usual [1-3-2].

1-4



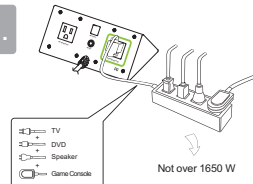
Turn off ES101 by pressing OFF on the supplied Remote Control. Then both ES101 and the attached electronic product will be shut down and thus enter into the standby power saving mode.

Note



ES101 is also with an extra AC Power Extension Socket for those electronic products that are not suitable to be turned off the power (such as UPS, fax machine, telephone and answering machine).

II.

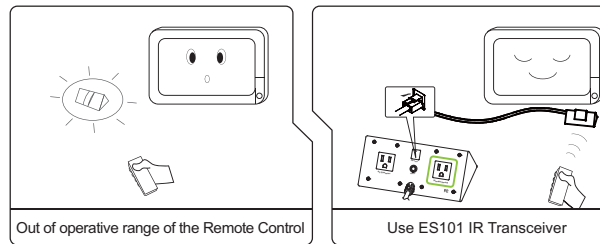


You may plug a piece of power extension cord into the green socket of ES101. And then attach electronic products with standby function into this power extension cord as long as the total power used is not over 1,650 Watts. (In general, you may attach 1 ~ 4 consumer electronic products such as LCD TV, DVD/HD player, stereo speakers or game console... etc.) Please refer to your electronic product manual for the power rating notice.



For safety reason, ES101 protection function will be activated if the total power is overloaded. The Overload Reset Button will be popped up to cut off the electricity. Please remove 1-2 (or more) connected electronic products from the power extension cord and then push back the Overload Reset Button to restart to work.

III.



Out of operative range of the Remote Control

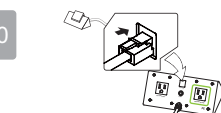
Use ES101 IR Transceiver

In case ES101 is out of the operative range of the Remote Control, you may use the optional IR Transceiver (by plugging it into the IR Transceiver Cable Socket on ES101 Back Panel), which should be placed in a suitable location where the Remote Control can reach it.

2 Using Electronic Product's Remote Control: for general use

The instruction below is for using IR based Remote Control (hereafter called the REMOTE) of the electronic product.

2-0

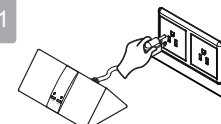


Plug IR Transceiver Cable Plug into the IR Transceiver Cable Socket on ES101 Back Panel.



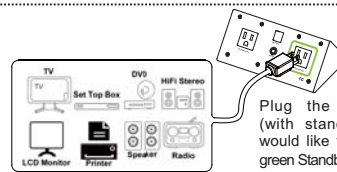
For safety concern, please do not plug (unplug) IR Transceiver Cable into (from) the Cable Socket when ES101 is in use.

2-1



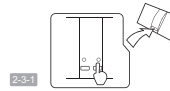
Plug ES101 Power Plug into the power mains.

2-2

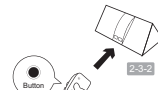


Plug the desired electronic product (with standby function, ex. TV) that you would like to save standby energy into the green Standby Power Saving Socket of ES101.

2-3 ES101 is capable to "learn" the REMOTE as follows



2-3-1 Press & hold the Learn Button on ES101 Front Panel



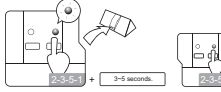
2-3-2 Aim the REMOTE at the center of the ES101 Front Panel.



2-3-3 Press & release any button (but NOT the power button) on the REMOTE. It is suggested to choose the button that is seldom used..



2-3-4 ES101 green Learn Indicator LED is on.



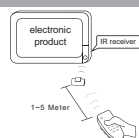
2-3-5 After a while, the green Learn Indicator LED starts to flash. Waiting for another 3 ~ 5 seconds, then release ES101 Learn Button.



2-3-6 Now the REMOTE can operate ES101.

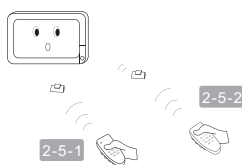
Application

2-4



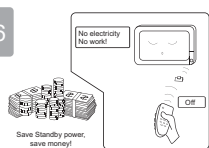
Place IR Transceiver in front of the location of the electronic product's IR receiver. (Please refer to the electronic product manual for its IR receiver location). And keep the front side of IR Transceiver to face the location where the REMOTE can reach it..

2-5



Aiming at IR Transceiver, click the chosen button (see above [2-3-3]) of the REMOTE to turn on ES101 [2-5-1]. Then operate the electronic product as usual [2-5-2].

2-6



Aiming at IR Transceiver, click the chosen button (see above [2-3-3]) of the Remote to turn off ES101. Then both ES101 and the attached electronic product will be shut down and thus enter into the standby power saving mode.

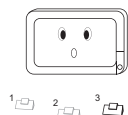
Note

I.



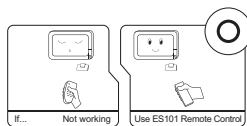
The REMOTE must be an Infrared (IR) Remote Control. Please refer to your electronic product manual for further details.

II.



If the electronic product's IR receiver location cannot be found, then try to place IR Transceiver on the Front Left, Front Center or Front Right side of the electronic product.

III.



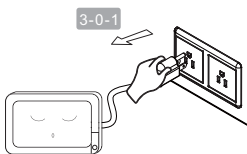
If the REMOTE cannot active ES101, then relearn ES101 by running Step [2-3-1] ~ [2-3-6]. And if the REMOTE still fails, then use the supplied Remote Control of ES101 in stead and follow the Using ES101 with its Own Supplied Remote Control instruction.

3 Using Electronic Product's Remote Control: for advanced use

The instruction below is for using IR based Remote Control (hereafter called the REMOTE) of the electronic product.

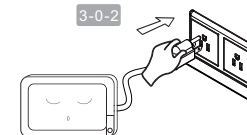
3-0

Set-up



3-0. Before using ES101 under this mode, please proceed with the procedure below to calculate "Time Delay":

3-0-1 Disconnect the electronic product's power plug from its original wall mount power outlet.



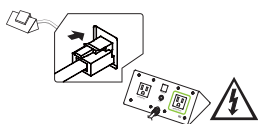
3-0-2 Wait for about one minute; then reconnect the power plug back to the same wall mount power outlet. And start to count the "Delay Time".



3-0-3 In the meantime, aim the REMOTE at the electronic product and press the REMOTE's power ON button repeatedly until the electronic product is turned on and can be operated normally. Then record the time required from when the power plug is reconnected to the wallmount power outlet to when the electronic product can be operated normally.



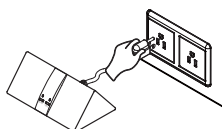
3-0-4 The time recorded is referred as the "Time Delay"; it will be used later for Step [3-3-1] ~ [3-3-6].



3-0-5 Plug IR Transceiver Cable Plug end into the IR Transceiver Cable Socket on ES101 Back Panel.

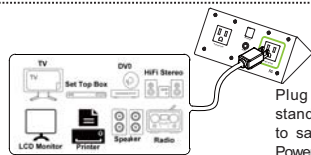
For safety concern, please do not plug (unplug) IR Transceiver Cable into (from) the Cable Socket when ES101 is in use.

3-1



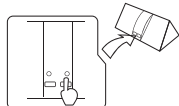
Plug ES101 Power Plug into the power mains.

3-2

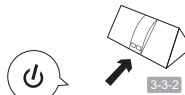


Plug the desired electronic product (with standby function, ex. TV) that you would like to save standby energy into the green Standby Power Saving Socket of ES101.

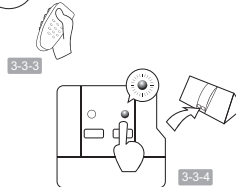
3-3 ES101 is capable to "learn" the REMOTE as follows



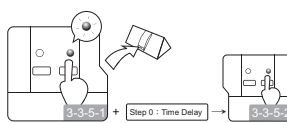
3-3-1 Press & hold the Learn Button on ES101 Front Panel.



3-3-2 Aim the REMOTE at the center of the ES101 Front Panel.



3-3-3 Press & release the REMOTE's power button.



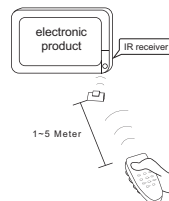
3-3-4 ES101's green Learn Indicator LED is on.



3-3-5 After a while, the green Learn Indicator LED starts to flash. Waiting for another 3 ~ 5 seconds, count the number of seconds required taken from step [3-0] for "Time Delay". And then release ES101's Learn Button.

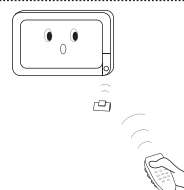
3-3-6 Now the REMOTE can operate ES101.

3-4



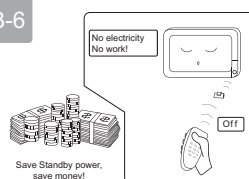
Place IR Transceiver in front of the location of the electronic product's IR receiver. (Please refer to the electronic product manual for its IR receiver location). And keep the front side of IR Transceiver to face the location where the REMOTE can reach it.

3-5



Aiming at IR Transceiver, click the power button of the REMOTE to turn on ES101. Almost at the same time (or after a few seconds), the electric product will automatically be turned on as well. Then operate the electronic product as usual.

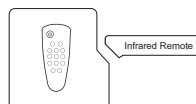
3-6



Aiming at IR Transceiver, click the power button of the REMOTE to turn off ES101. Then both ES101 and the attached electronic product will be shut down and thus enter into the power saving mode.

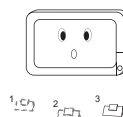
Note

I.



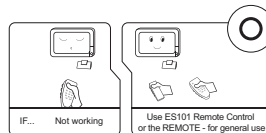
The REMOTE must be an Infrared (IR) Remote Control. Please refer to your electronic product manual for further details.

II.



If the electronic product's IR receiver location cannot be found, then try to place IR Transceiver on the Front Left, Front Center or Front Right side of the electronic product.

III.



If the REMOTE cannot active ES101, then relearn ES101 by running Step [3-3-1] ~ [3-3-6]. And if the REMOTE still fails, then use the supplied Remote Control of ES101 in stead and follow the USING ES101 with its Own Supplied Remote Control instruction. Or still use the REMOTE but follow the instruction of "for general use".

Warranty

Warranty

We warrant that the hardware product will be free from defect in materials and workmanship. The limited warranty term is ONE YEAR from the original invoice date. This limited warranty does not cover damages due to accident, abuse, misuse, negligence, vandalism, servicing not authorized by our company, improper use of product, problems caused by use of parts and components not supplied by our company and natural causes such as fire, flood, wind, lightning or any others. All OUT OF WARRANTY repairs are subject to a repair fee. Within the warranty period, we will repair or replace the product returned to us and the limited warranty term will not be extended. If the service is required, we will issue a Return Material Authorization (RMA) Number for the repair or replacement process.